

# LUXURY LOFTS

FOR LEASE AT  
3041 LOCUST

STARTS  
FROM  
**\$1,875/MO**



## ABOUT PROPERTY

Luxury Lofts with a European Kitchen Equipped with Blank Appliances, Electric Fireplaces in the Living Area, Large Walk-In Closets in Every Bedroom with 6' Bathtubs and Showers in Bathrooms. Live in St. Louis Premier Creative District Being Surrounded by Restaurants and Retail.

## PROPERTY DETAIL



### 1- 2 BEDROOMS

Bedrooms that include large walk-in closets and large windows



### ROOFTOP DECK

Outdoor Area with Patio Furniture and Jacuzzi Pool



### GARAGE

Located in the Tate Annex with Electric Chargers

GET IN TOUCH

**JASSEN JOHNSON**

**314.614.6181**

[JASSEN@RISETOTHELOCATION.COM](mailto:JASSEN@RISETOTHELOCATION.COM)

[www.risetothelocation.com](http://www.risetothelocation.com)



**TOWER**  
REAL ESTATE GROUP



## Cabrio

1 Bedroom  
1 Bath  
1,125 SF

2nd Floor:  
\$1,875.00/MO

Penthouse:  
\$2,015.63/MO

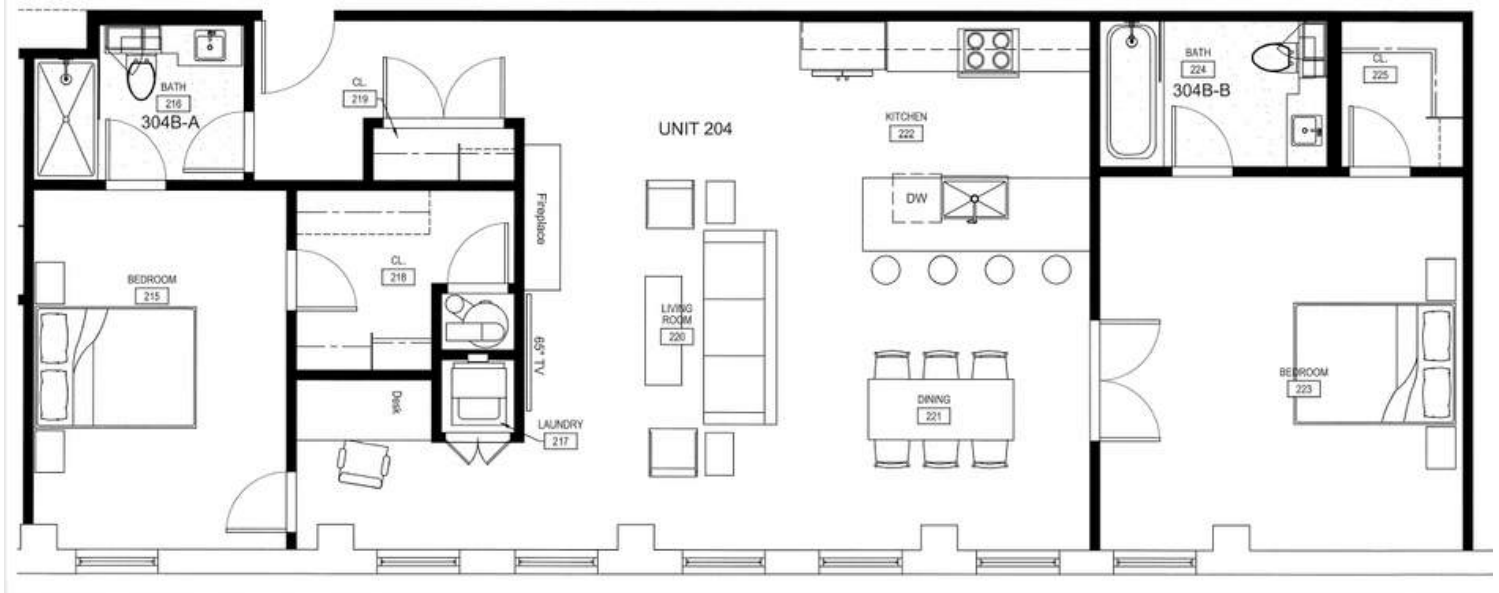


## Roadster

2 Bedroom  
2 Bath  
1,540 SF

2nd Floor:  
\$2,630.83/MO

Penthouse:  
\$2,759.17/MO

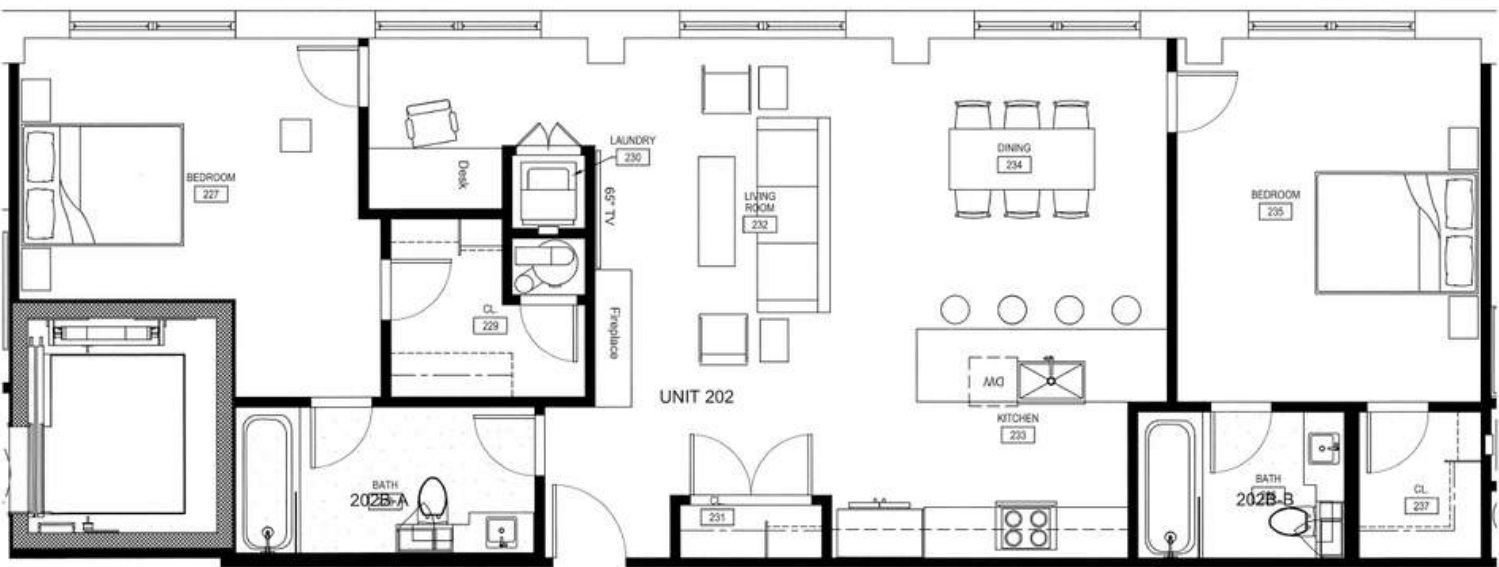


**Speedster**

2 Bedroom  
2 Bath  
1,380 SF

2nd Floor:  
\$2,300.00/MO

Penthouse:  
\$2,472.50/MO



**Tourer**

2 Bedroom  
2 Bath  
1,243 SF

2nd Floor:  
\$2,071.67/MO

Penthouse:  
\$2,227.04/MO





**Proposed Rooftop**



**Main Residential Entrance**



**Proposed Parking Garage**

**GET IN TOUCH**

**JASSEN JOHNSON**

**314.614.6181**

[JASSEN@RISETOTHELOCATION.COM](mailto:JASSEN@RISETOTHELOCATION.COM)

[www.risetothelocation.com](http://www.risetothelocation.com)



**TOWER**

REAL ESTATE GROUP